

cohealth's sobering service

Acknowledgement of Country

cohealth acknowledges the Traditional Custodians of the lands and waterways where our offices stand, the Boon Wurrung, Wurundjeri and Wathaurung people, and pay respect to Elders past and present.

Content warning:

Aboriginal and Torres Strait Islander people are warned that the following presentation contains the name of a deceased person.

about cohealth

cohealth is one of Australia's largest not-for-profit community health organisations. We strive to **improve health and wellbeing for all**.

We offer a broad range of **high quality, integrated health and support services**, including medical, nursing, dental, allied health, counselling, alcohol and other drugs, mental health and community support services.



our communities

With over 1,000 staff and across 30 + sites in the CBD, northern and western suburbs, cohealth prioritises working directly with **people who face the greatest barriers to good health and wellbeing** – such as:



people with a disability



Aboriginal and Torres Strait Island people



people experiencing homelessness



people who use alcohol and other drugs



refugees and asylum seekers



people from culturally and linguistically diverse backgrounds



people with mental illness



members of the LGBTQIA+ community

PIR – Public Intoxication Response - background

A health response to public intoxication.



sobering service a health-led response to public intoxication



mobile outreach and transport

Metro wide
Thursday to Sunday (on-call other times)



sobering centre

20 bed facility
24/7 at Cambridge St, Collingwood

mobile outreach and transport

A **24/7 metropolitan-wide service** operated by cohealth teams of two including:

- one enrolled nurse
- one outreach worker



mobile outreach and transport catchment

The outreach team will attend high-risks hotspots from Thursday to Sunday and respond to call outs at all times.

- Callouts: 24/7
- Assertive outreach: Thurs–Sun



mobile outreach and transport service model

1. Engage
2. Assess
3. Provide care
4. Transport in purpose built vehicle (optional)

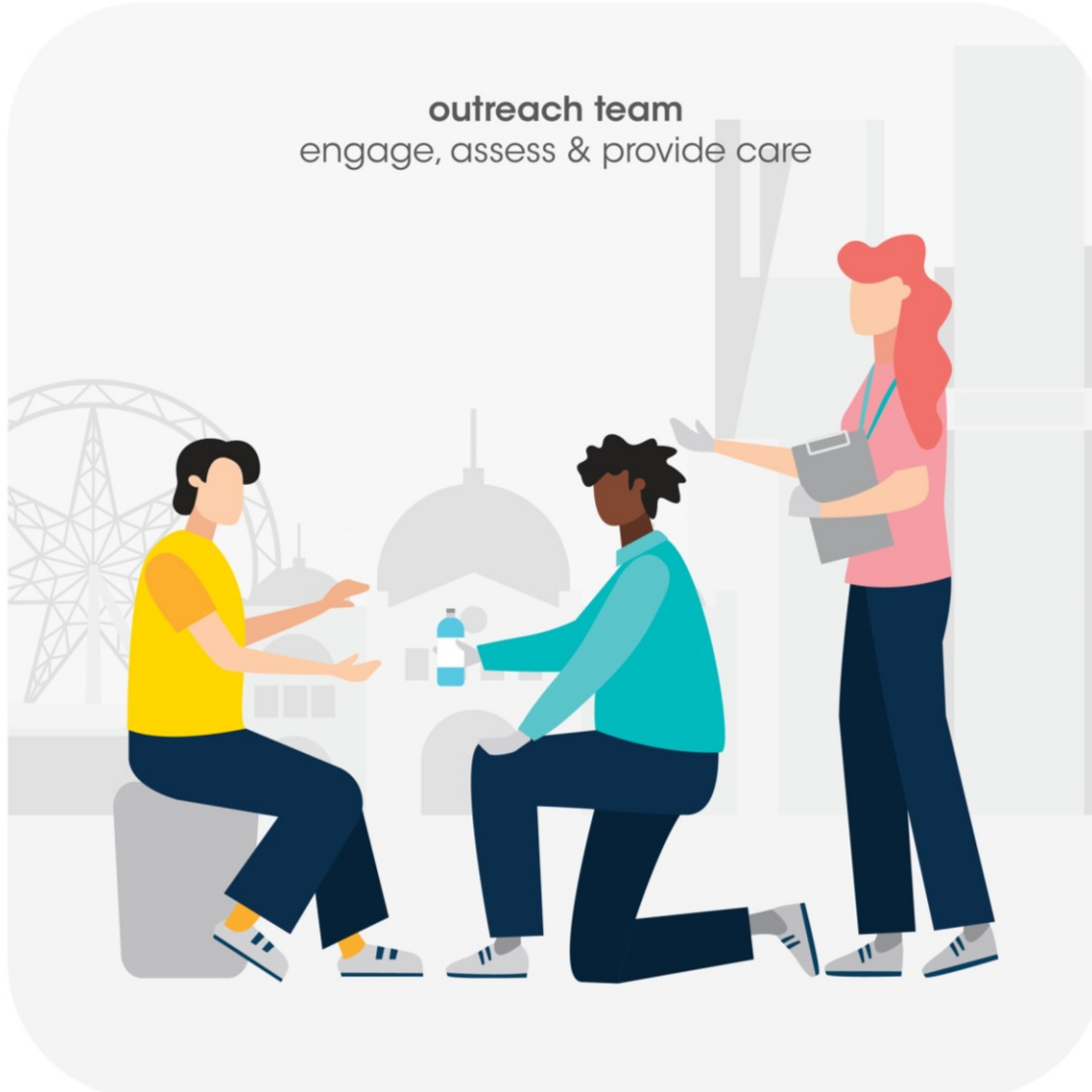


mobile outreach and transport service model

teams visit hotspots
or is called out



outreach team
engage, assess & provide care



- • • •  safely return home
- • • •  if safe leave in place
- • • •  with consent transport to sobering centre 24/7
- • • •  acute health need: ambulance
- • • •  safety risk: police

mobile outreach and transport eligibility

- no age restrictions
- consent
- able to walk with assistance
- non-violent



sobering centre

A safe place to sleep under health supervision and assessment.

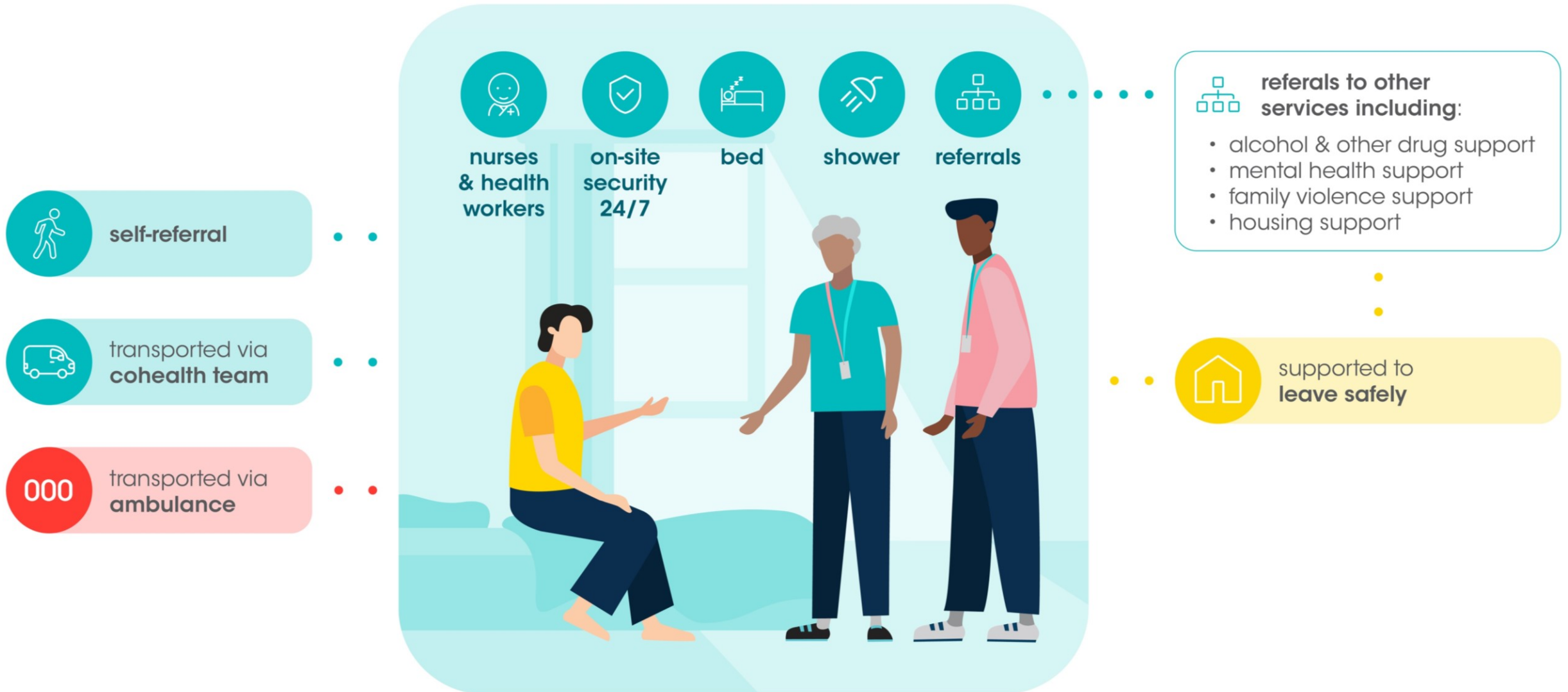
- for mainstream community
- operated by cohealth
- 20 beds
- Open 24 hours - 7 days per week



sobering centre



sobering centre service model



The story so far....

November 2023 – April 2024:

- **5625 community contacts**
- **417 people conveyed to Sobering Centre av. 20 per week**
- **Majority of contacts required assistance only**



The story so far....

‘A male was located by police lying in the bushes in the car park at McDonalds in Church Street near the Richmond Police Station. He was highly intoxicated and police were concerned for his safety so they called for the Sobering Service that attended promptly. The man was assessed by the service and conveyed to the Sobering Centre in Collingwood.’

‘I’m now sold on this service’ – Sergeant Richmond Police.

How to contact the Sobering Service....

The following groups will be able to contact the centralised intake and despatch service run by VAHS directly on:

03 7043 9175

- **Emergency services (Victoria Police, Ambulance Victoria, PSOs)**
- **Local government authorities**
- **Liquor licensees**
- **Transport operators**

All other agencies and the general public can request assistance by calling '000' and asking for the Sobering Service

Tours of the Sobering Centre can be arranged....



thank you

For more information:

Greg.Denham@cohealth.org.au

[0424 193857](tel:0424193857)

or visit cohealth.org.au/sobering-service



everyone is welcome at **cohealth**